



Brook Dam Lane, Soham, Cambridgeshire, CB7 5HZ

Rent - £800 PCM

Deposit - £923

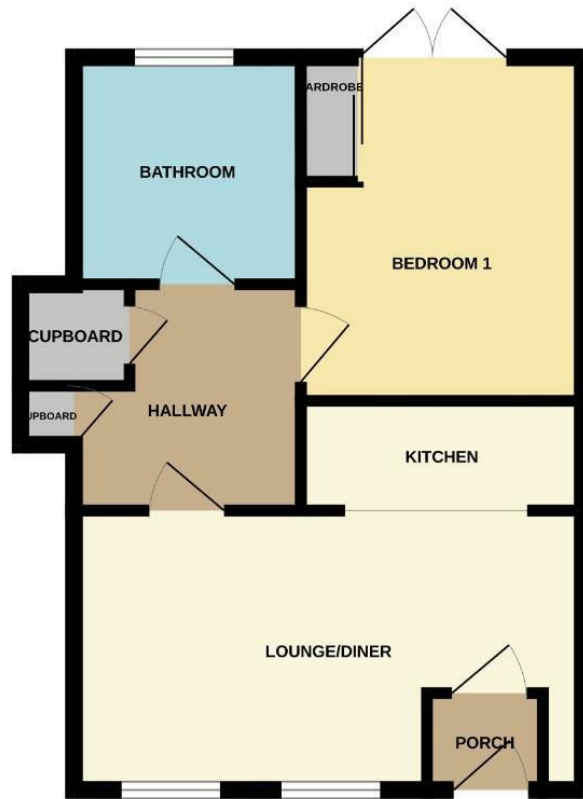
This one bedroom ground floor flat is ideally located for the town centre. The property comprises of 1 bedroom, spacious lounge, kitchen and bathroom. There is low maintenance rear garden and on street parking. Available now- call now to view!

- GROUND FLOOR FLAT
- 1 BEDROOM
- GOOD SIZE LOUNGE
- FAMILY BATHROOM
- LOW MAINTENANCE REAR GARDEN & ONE PARKING SPACE
- CLOSE TO THE TOWN CENTRE
- ELECTRIC HEATING & ENERGY RATING - C
- APPROXIMATE SIZE - 430 SQ FT
- PETS CONSIDERED / COUNCIL TAX BAND - A
- AVAILABLE NOW



Council Tax Band: A - EPC Rating: C 75

GROUND FLOOR
39.4 sq.m. (424 sq.ft.) approx.



TOTAL FLOOR AREA: 39.4 sq.m. (424 sq.ft.) approx.

Whilst every attempt has been made to ensure the accuracy of the floorplan contained here, measurements of doors, windows, rooms and any other items are approximate and no responsibility is taken for any error, omission or mis-statement. This plan is for illustrative purposes only and should be used as such by any prospective purchaser. The fixtures, systems and appliances shown have not been tested and no guarantee as to their operability or efficiency can be given.
Made with Metropix 52025

